

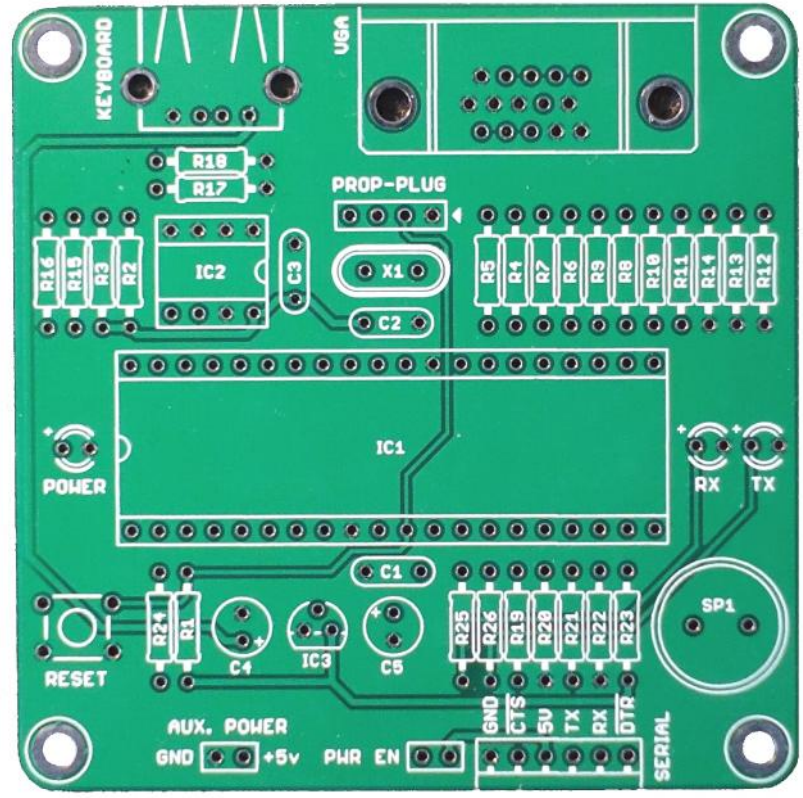
# Identify the following components

R1	10K	10K	4	Br Bk Bk Re
R2	4.7K	4.7K	2	Ye Pu Bk Br
R3	4.7K	510	3	Gr Br Bk Bk
R4	510	240	5	Re Ye Bk Bk
R5	240	130	3	Br Or Bk Bk
R6	510	220	3	Re Re Bk Bk
R7	240	47	2	Ye Pu Bk Go
R8	510	47K	2	Ye Pu Bk Re
R9	240	22K	2	Re Re Bk Re
R10	240	-----		
R11	240		26 resistors in total	

R12	130
R13	130
R14	130
R15	47
R16	47
R17	47K
R18	47K
R19	10K
R20	22K
R21	10K
R22	22K
R23	10K
R24	220
R25	220
R26	220
C1	100NF
C2	100NF
C3	100NF
C4	10uF
C5	10uF

X1	5Mhz
DL1	Green
DL2	Red
DL3	Yellow
IC1	MPU
IC2	24LC512
IC3	MC1700-330
SP1	Speaker
P1	Switch
USB	Connector
VGA	Connector
SK1	40pin DIL Socket
SK2	8pin DIL socket
JP1	Jumper
Various headers	
Power lead	

Propeller Chip  
Pre-Programmed



The programming connector is only needed to reprogram the eeprom and needs a parallax prop plug.  
The speaker leads need careful bending to fit. + to right edge