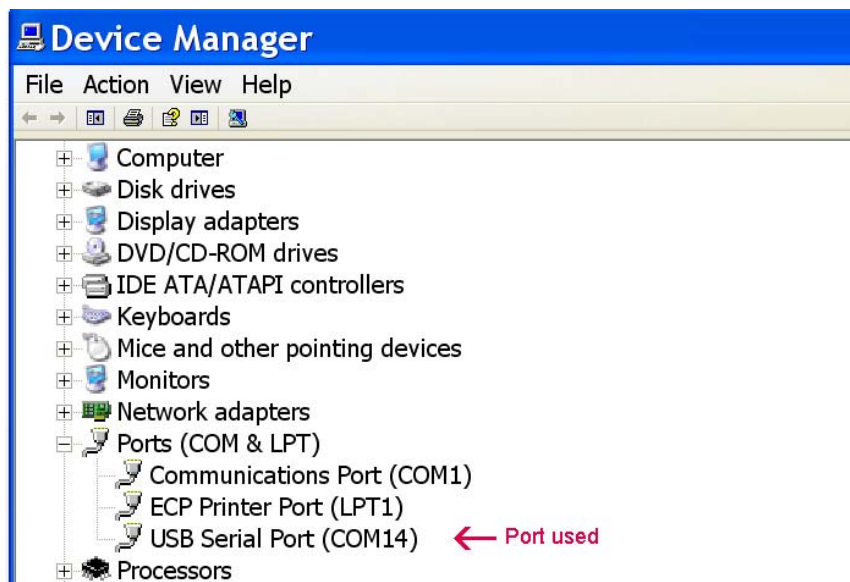


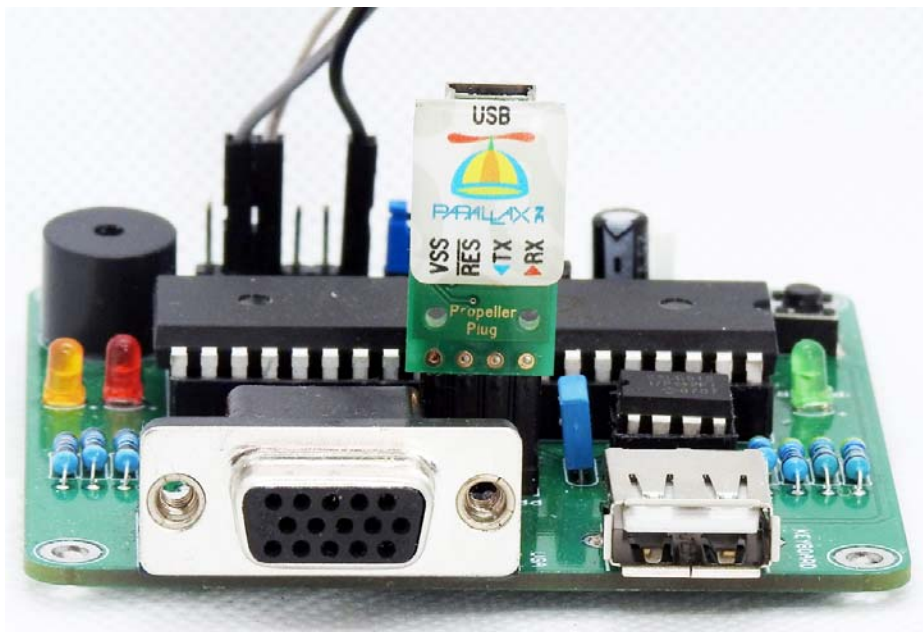
# Programming the terminal board with a Prop Plug

By Jim Watt [www.connect.gi](http://www.connect.gi) 3<sup>rd</sup> November 2020

1. Connect the Prop Plug to a USB port. The system should recognise it and load a driver.
2. Run the Device Manager to identify the port used



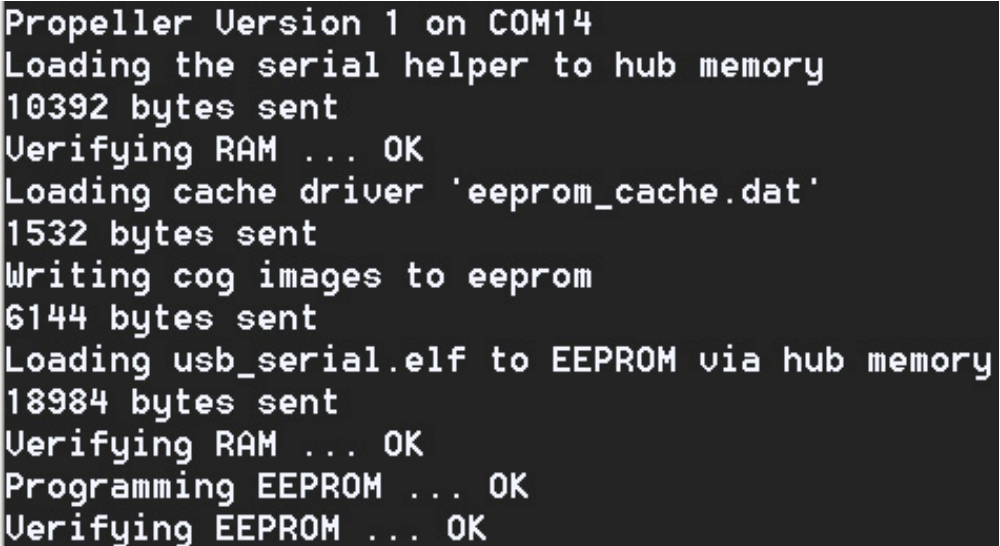
3. Connect the Prop Plug to the PCB as shown below



4. The board will NOT draw enough power from the USB connector to program the device reliably so you must connect the board power.

5. Open a DOS CMD window and navigate to the directory containing the programming software you downloaded with this file
6. Type the command changing COM14 to the port used on your machine:

```
propeller-load -p COM14 -e -r usb_serial.elf
```



```
Propeller Version 1 on COM14
Loading the serial helper to hub memory
10392 bytes sent
Verifying RAM ... OK
Loading cache driver 'eeprom_cache.dat'
1532 bytes sent
Writing cog images to eeprom
6144 bytes sent
Loading usb_serial.elf to EEPROM via hub memory
18984 bytes sent
Verifying RAM ... OK
Programming EEPROM ... OK
Verifying EEPROM ... OK
```

7. Your EEPROM is now programmed with the firmware.

Credit: The design and programming is by Marco Maccaferri who provided the modified programming software and invaluable assistance in using it.